

# Our network.

## Kentucky Network Access

*The Dental Care Plus Group's growing provider networks mean more viable plan design options for employers and increased access for their enrollees. We coordinate with our customers to offer a dental benefit plan to meet their network access needs — locally, regionally or nationally.*

### Growing Provider Networks

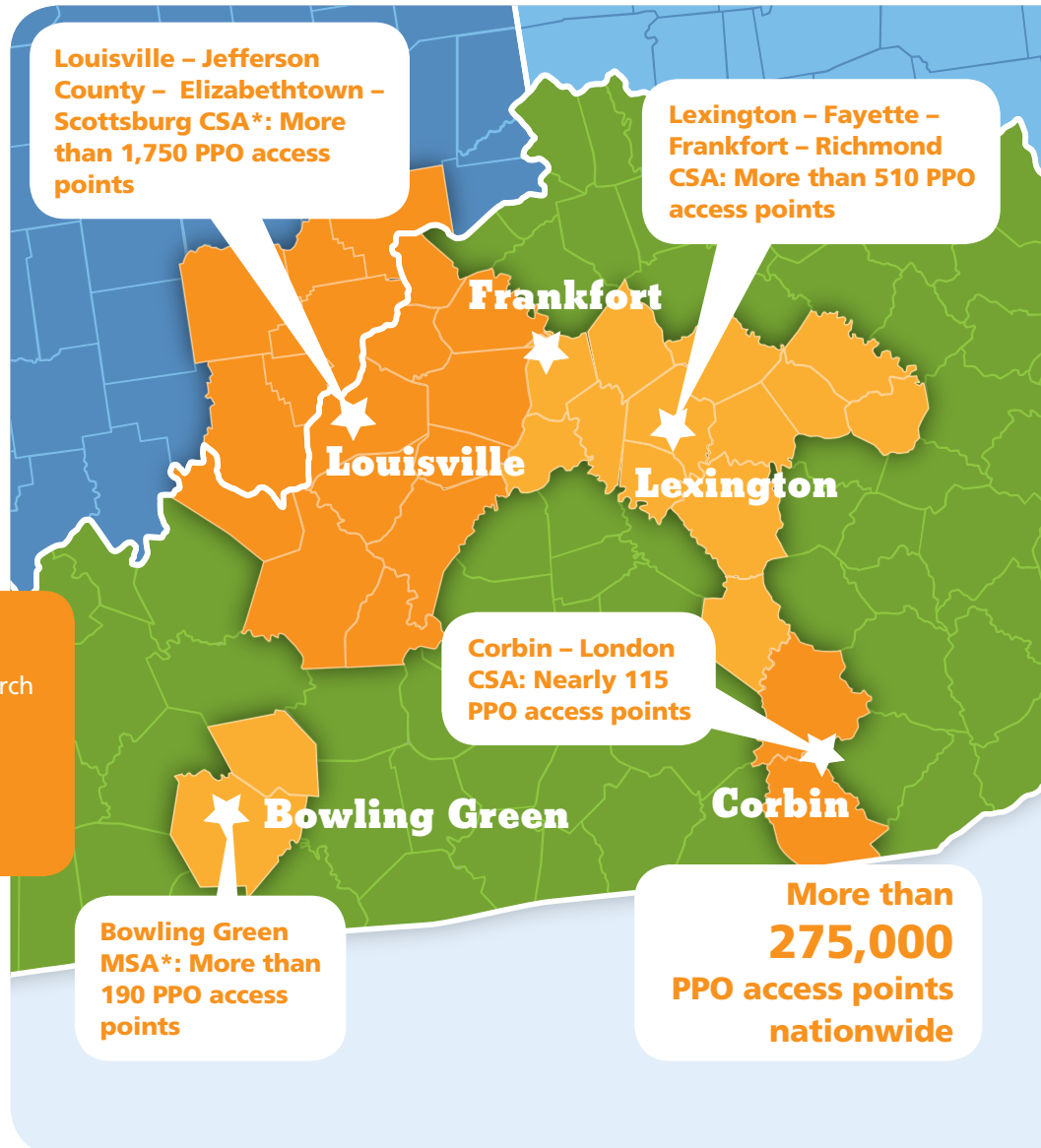
As The Dental Care Plus Group (DCPG) has increased our presence in Kentucky, we remain committed to growing our provider networks, ensuring more options for members. We patiently recruit dentists to join our networks through consistent communication and follow-up.

### Nationwide Access

DCPG's nationwide network of more than 275,000 PPO access points gives members access to dentists where they need it. Should groups sited in Kentucky have employees that live out-of-state, they too would have the same nationwide access.

### Find a Dentist

Members can use our online tool to search for an in-network dentist by ZIP code, specialty or last name. It's as simple as visiting [fad.dentalcareplus.com](http://fad.dentalcareplus.com) then selecting the appropriate plan listed on the Member ID card.



For more information, call (800) 367-9466 or visit [DentalCarePlus.com](http://DentalCarePlus.com).

T H E P L U S I S S E R V I C E