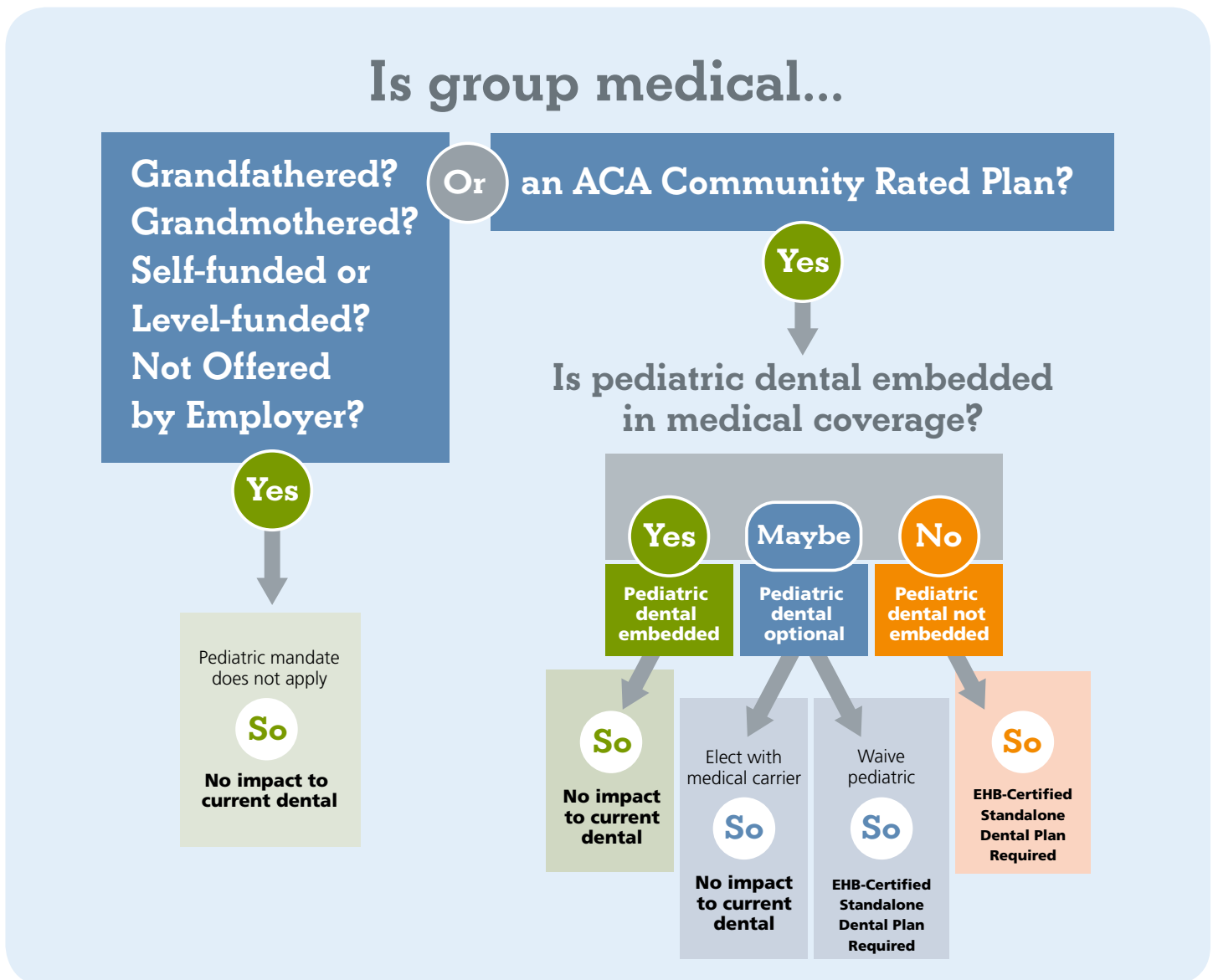


Making Compliant Dental Decisions

Asking some key questions can help a group determine which path to take with its dental benefits, ensuring the mandates of the Affordable Care Act are met.

The first question to ask, as shown below, is if the group's medical is grandfathered/grandmothered/self-funded or level-funded OR an ACA Community Rated Plan. Follow the appropriate path of questions and answers to determine how the group's dental is ultimately impacted. This information is applicable to small groups in Ohio, Kentucky and Indiana with fewer than 50 Full-Time Equivalents (FTEs).



For more information, call (800) 367-9466 or visit DentalCarePlus.com.

T H E P L U S I S S E R V I C E