

# Our network.

## Ohio PPO Network Access

*The Dental Care Plus Group's growing provider networks mean more viable plan design options for employers and increased access for their enrollees. We coordinate with our customers to offer a dental benefit plan to meet their network access needs — locally, regionally or nationally.*

### Growing Provider Networks

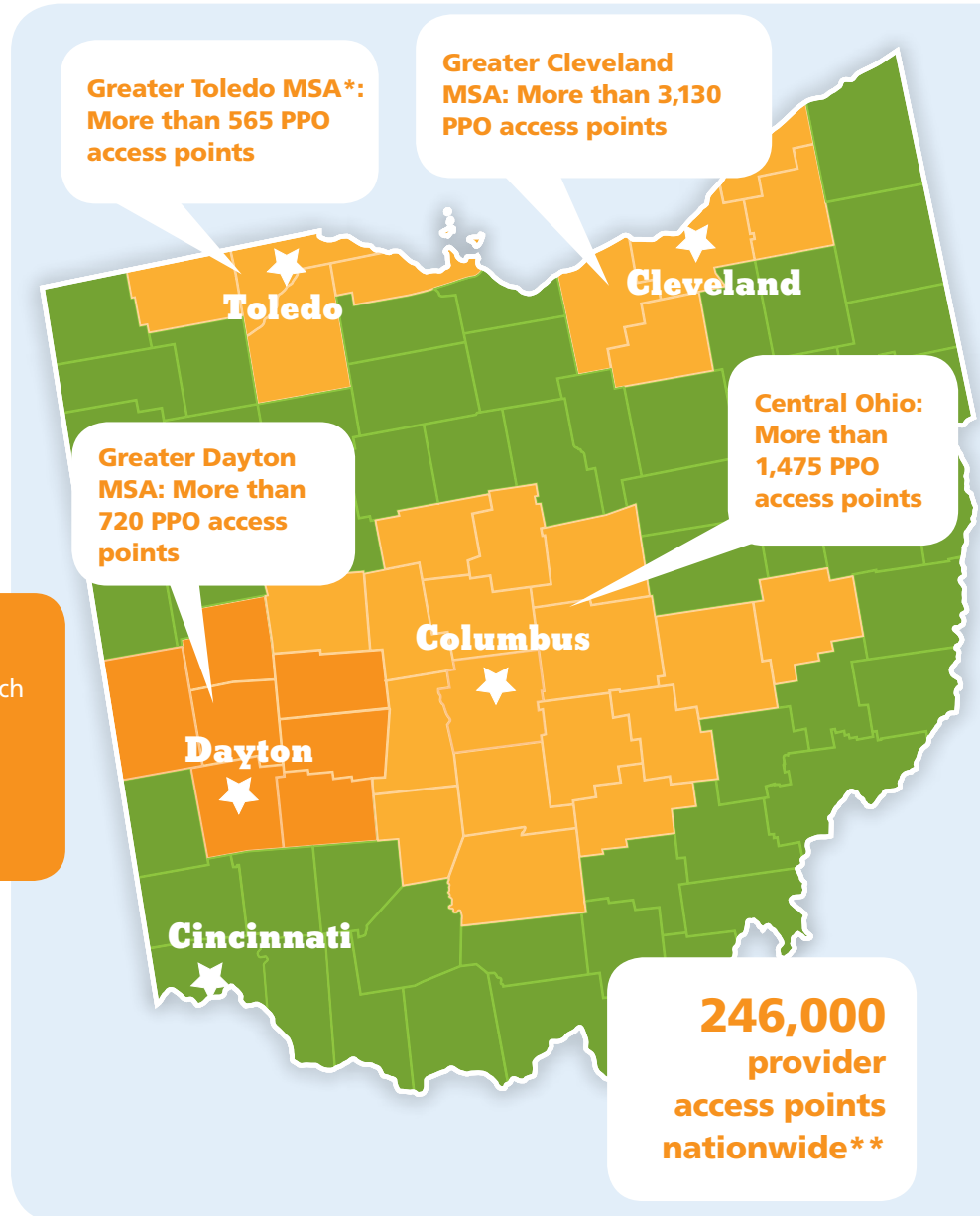
As The Dental Care Plus Group (DCPG) continues to increase our presence in Ohio and beyond, we are committed to growing our provider networks, ensuring more options for members. We patiently recruit dentists to join our networks through consistent communication and follow-up.

### Nationwide Access

DCPG's nationwide network of 246,000 PPO access points gives members access to dentists where they need it. Should groups sited in Ohio have employees that live out-of-state, they too would have the same nationwide access.\*\*

### Find a Dentist

Members can use our online tool to search for an in-network dentist by ZIP code, specialty or last name. It's as simple as visiting [fad.dentalcareplus.com](http://fad.dentalcareplus.com) then selecting the appropriate plan listed on the Member ID card.



For more information, call (800) 367-9466 or visit [DentalCarePlus.com](http://DentalCarePlus.com).

T H E P L U S I S S E R V I C E

Dental insurance plans are issued by Dental Care Plus, Inc., located at 100 Crowne Point Place, Cincinnati, OH 45241. Domicile: Ohio. NAIC No. 96265.

\*An MSA is a metropolitan statistical area as defined by the U.S. Census Bureau. \*\*DCPG's HMO product is available to groups based in Butler, Clermont, Hamilton or Warren counties in Ohio and in Boone, Campbell, Kenton or Pendleton counties in Kentucky. Employers based in any of these eight counties with employees living outside of the counties can pair the HMO product with our PPO product and enjoy seamless network coverage across the nation.

Network\_Access\_Ohio\_PPO

REV. 07-17